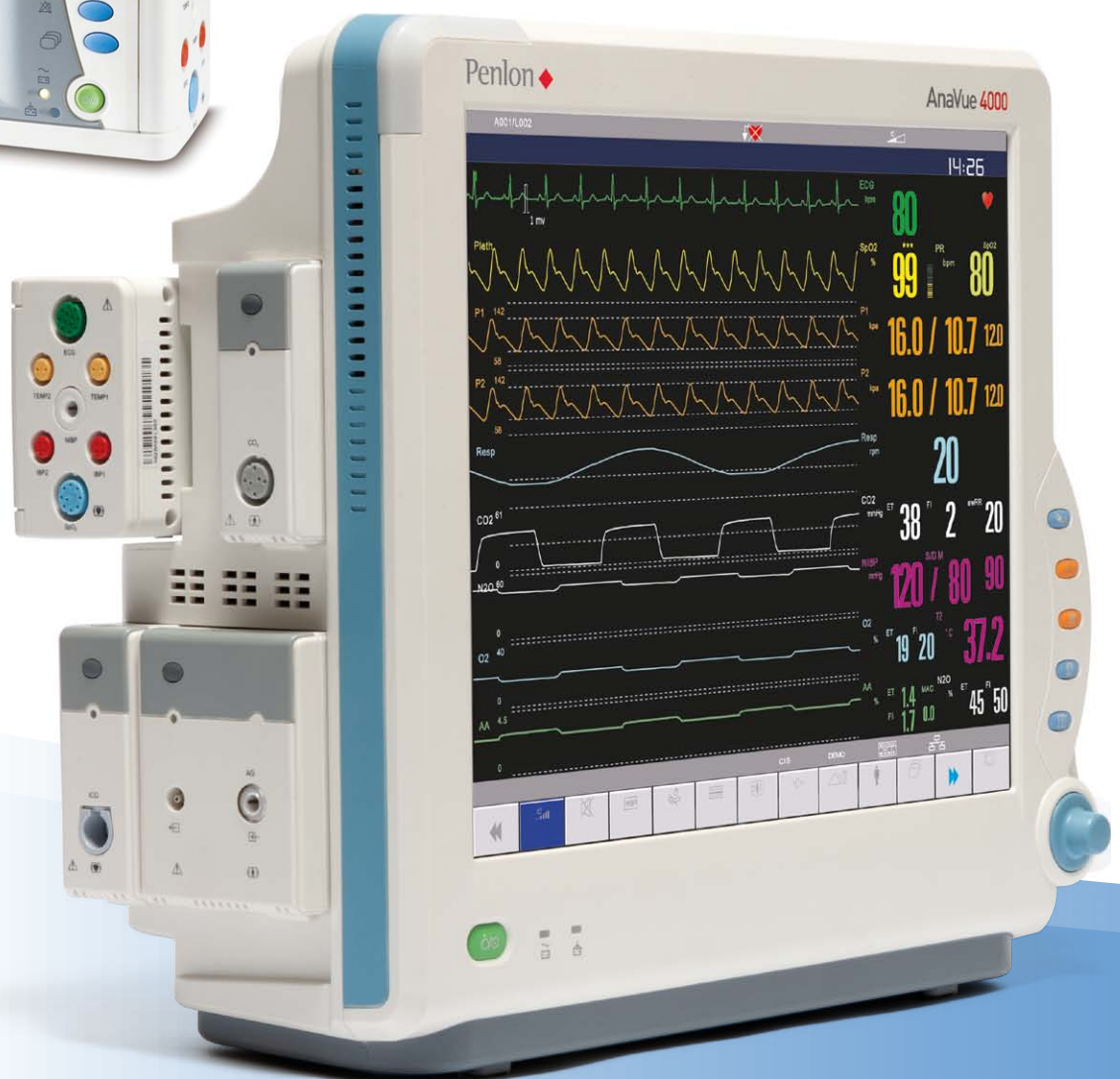


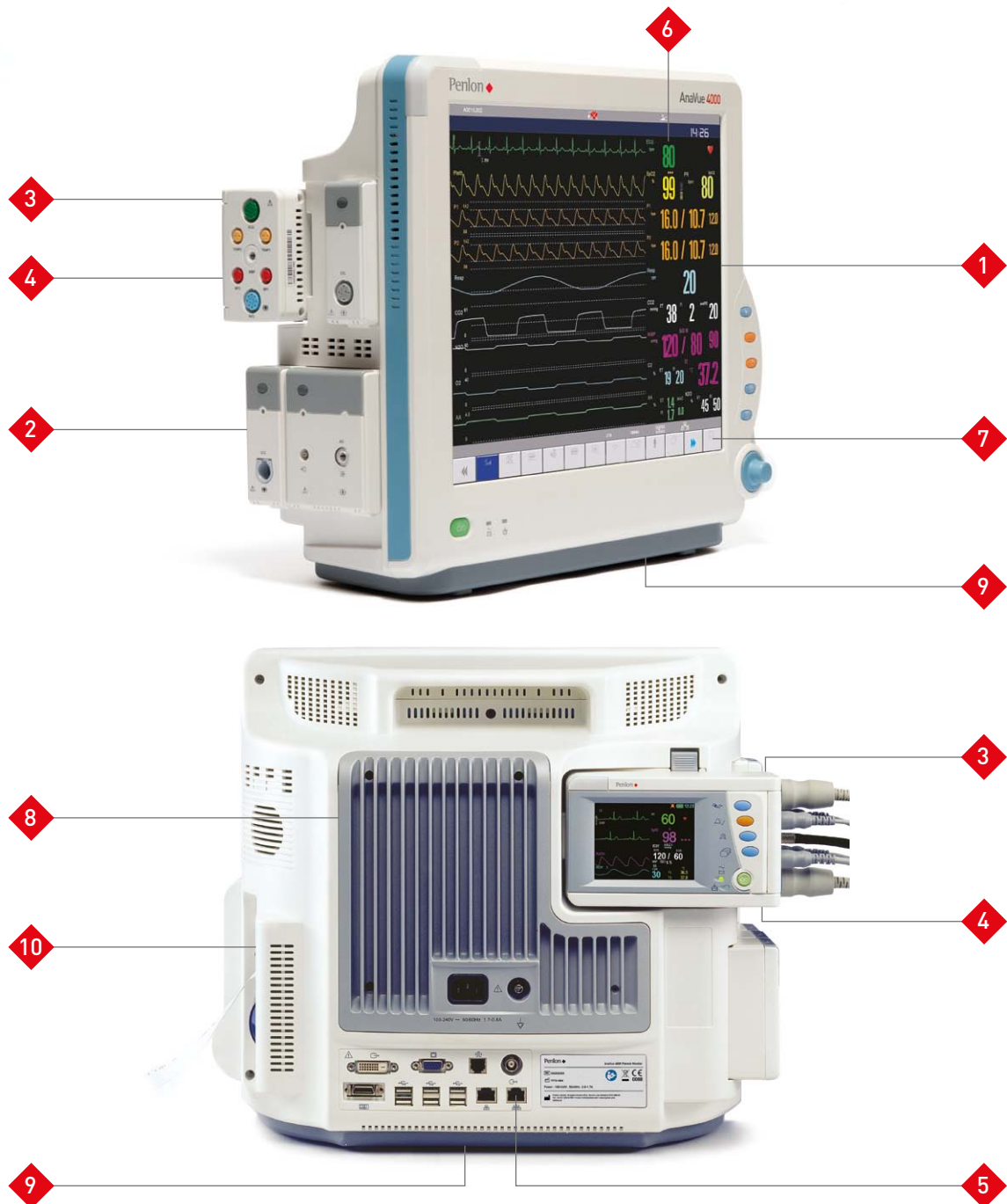
# Penlon AnaVue 4000 Patient Monitor

## PATIENT MONITORING SOLUTIONS

- ♦ Modular patient monitor for anaesthesia and critical care
- ♦ User-defined multi-parameter display
- ♦ Seamless monitoring with the EMS plug-in module
- ♦ Full transport functionality as a secondary display, remote from main monitor
- ♦ Programmable touchscreen configuration
- ♦ FDA and CE certified



# Penlon AnaVue 4000 Patient Monitor



Simple intuitive user interface enables clinical staff to concentrate on improved patient outcomes with accurate physiological data

- 1 17" TFT LCD touchscreen colour display and slave screen capability
- 2 Parameters: ECG, RESP, NIBP, SpO<sub>2</sub>, TEMP, IBP, CO<sub>2</sub>, Anaesthetic Gas/O<sub>2</sub>, C.O., ICG, CSM, EEG and BIS
- 3 Multi-parameter, dual-function EMS - Plug-in module/Transport monitor with 3.5" touchscreen
- 4 8-hour trend data storage on EMS
- 5 Networkable as standard, with wireless LAN option
- 6 Unique display management function uses scalable screen elements to customize the display
- 7 User-definable smart-key controls
- 8 Quiet, fan-less cooling system
- 9 Rechargeable lithium battery
- 10 2 GB SD memory card for enhanced data storage handling (upgradeable to 4 GB)

# The Penlon AnaVue 4000 Patient Monitor is a sophisticated system that delivers continuous monitoring and data upload during patient transfers.

Modular design and extensive range of parameters provide flexibility for a wide variety of clinical situations, including the operating theatre and recovery.



## Control and Visualisation

17" TFT colour touchscreen display with prompt knob, smart-key control and audio/visual indicators.



## Calculations

Perform haemodynamic calculations and concentration calculations of commonly used drugs



## Customisable Display

Unique display management function uses scalable screen elements to customize the display.



## Networking Capabilities

RJ45 wired networking as standard, with IEEE 802.11g wireless option.



## Patient Profiles

Suitable for adult, paediatric and neonatal patient profiles.



## Anaesthetic Gas Monitoring

Mainstream or Sidestream, five anaesthetic agents, and measurement of CO<sub>2</sub>, N<sub>2</sub>O and O<sub>2</sub> (Sidestream only).



## Alarms

Audible and visual alarms with colour coding separate for physiological and technical alarms.



## Connectivity

Extensive range of connection ports including DVI, VGA, USB, analogue output and HIS (HL7 compatible).



## Battery BackUp

Provides power to the machine for up to 1 hour, in the event of an AC mains power failure.



## Cooling System

Quiet, fan-less cooling system provides unintrusive operation.



## Mounting Options

Rolling stand, wall mount or anaesthesia workstation mounting options.



## Thermal Recorder

Output patient information, measurement data, review data and up to three waveforms.



## Maintenance and After-Sales Support

Comprehensive warranty provides peace of mind and after-sales support. Additional services and warranties can be purchased to meet your particular needs.



## Standards Compliant

Fully compliant to ISO 80601-2-13, ISO 80601-2-30, ISO 80601-2-55, EN 12470-4 and IEC 60601-1.

## EMS - Continuous Monitoring

Multifunctional plug-in module; can be detached and used for standalone monitoring during patient transfer and recovery.

### 1 Multi-parameter Module

The EMS functions as a multi-parameter plug-in module. Select up to six parameters (see table, opposite).

### 2 Patient Transfer

Easy to remove/refit. Functionality includes patient data storage during transfer (max. 8 hours trend data).

### 3 At the Bedside

Connect to another host monitor and upload patient data. EMS is compact and lightweight (0.6 kg), and gives up to 60 minutes operation (rechargeable lithium ion battery). Full standalone functionality with 3.5" touchscreen.

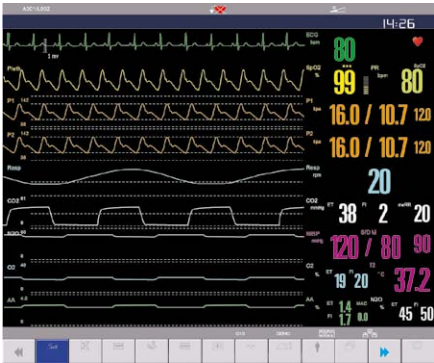
### 4 Colour TFT LCD Display

3.5" display with automatic screen rotation to portrait or landscape orientation.



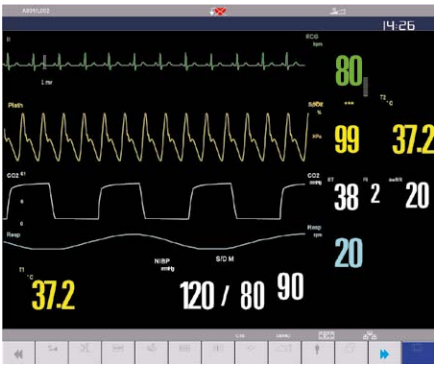
### Anaesthesia Gas Analysis

Mainstream or Sidestream, five anaesthetic agents, and measurement of CO<sub>2</sub>, N<sub>2</sub>O and O<sub>2</sub> (Sidestream only) with fast response times



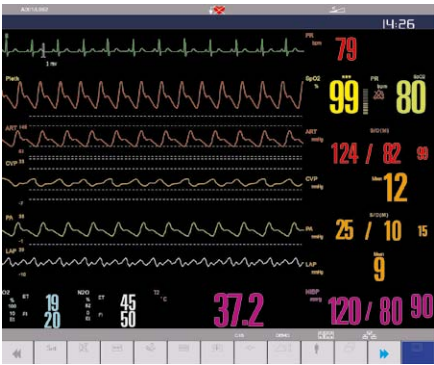
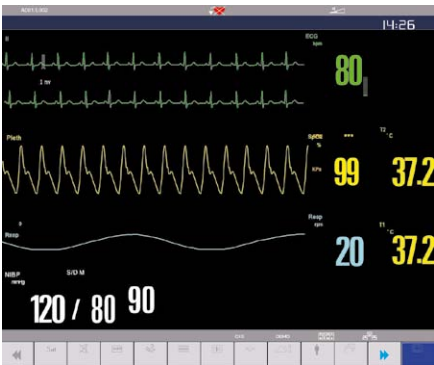
### EtCO<sub>2</sub> Monitoring

Mainstream, Sidestream or Microstream EtCO<sub>2</sub> provide accurate measurement irrespective of patient profile and clinical status



### SpO<sub>2</sub> Monitoring

Standard SpO<sub>2</sub> module, plus optional Masimo MX™ or Nellcor SpO<sub>2</sub> modules available



The modular design of the AnaVue 4000 allows clinicians to configure the patient monitor to their clinical requirements, whether for anaesthesia or critical care applications.

### IBP Monitoring

Multi-waveform display for up to four channels of invasive blood pressure measurement

# EMS Parameter Options



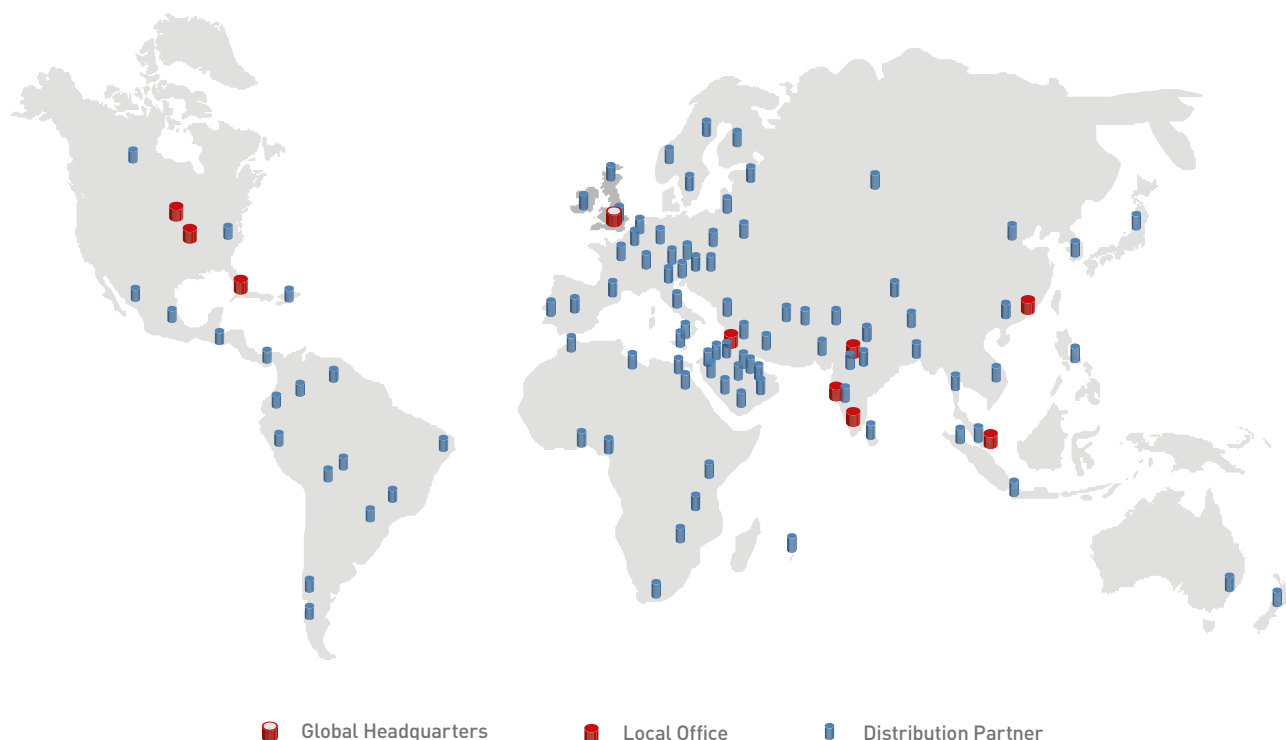
Configuration	RESP	2-TEMP	NIBP	2-IBP	3/5 ECG	12 ECG	SpO <sub>2</sub>	Touch screen
EMS Module #1	✓	✓	✓	✓	✓		Standard	✓
EMS Module #2	✓	✓	✓	✓		✓	Standard	✓
EMS Module #3	✓	✓	✓		✓		Standard	✓
EMS Module #4	✓	✓	✓			✓	Standard	✓
EMS Module #5	✓	✓	✓	✓	✓		Nellcor	✓
EMS Module #6	✓	✓	✓	✓		✓	Nellcor	✓
EMS Module #7	✓	✓	✓		✓		Nellcor	✓
EMS Module #8	✓	✓	✓			✓	Nellcor	✓
EMS Module #9	✓	✓	✓	✓	✓		Masimo	✓
EMS Module #10	✓	✓	✓	✓		✓	Masimo	✓
EMS Module #11	✓	✓	✓		✓		Masimo	✓
EMS Module #12	✓	✓	✓			✓	Masimo	✓

## About Penlon ♦

Penlon was founded in 1943 by personnel from the Department of Anaesthesia at Oxford University. One of the first products was the Macintosh Laryngoscope, then a revolutionary design, and still the most widely used today, invented by the late Sir Robert Macintosh, Professor of Anaesthetics.

Today Penlon continues to design, engineer and build high quality anaesthesia products at its UK operations headquarters. The company is proud to have over 70 years' dedicated experience, many awards for product design, and an impressive four Queen's Awards for Enterprise, one for 'Innovation' and three for 'International Trade'.

Penlon devices feature intuitive user interfaces that require minimal operator training, putting clinicians in control, enabling them to focus on what is most important – patient safety and wellbeing.



[facebook.com/PenlonGlobal](https://facebook.com/PenlonGlobal)



[linkedin.com/company/penlon-ltd](https://linkedin.com/company/penlon-ltd)



[twitter.com/PenlonGlobal](https://twitter.com/PenlonGlobal)

0088

Doc. No. AF0119SL / October 2019. Penlon, InterMed and AnaVue are trademarks of Penlon Limited. All other trademarks are the property of their respective owners.

Part of the InterMed Group © Penlon Ltd. 2019 All rights reserved

Penlon Limited  
Abingdon Science Park  
Barton Lane, Abingdon  
OX14 3NB, UK

**General**  
t +44 (0) 1235 547000  
f +44 (0) 1235 547041  
w [www.penlon.com](http://www.penlon.com)

**International Sales**  
t +44 (0) 1235 547001  
f +44 (0) 1235 547021  
e [international.sales@penlon.com](mailto:international.sales@penlon.com)

**UK Sales**  
t +44 (0) 1235 547036  
f +44 (0) 1235 547023  
e [uk.sales@penlon.com](mailto:uk.sales@penlon.com)

**Technical Support**  
t +44 (0) 1235 547060  
f +44 (0) 1235 547061  
e [tech.support@penlon.com](mailto:tech.support@penlon.com)

